

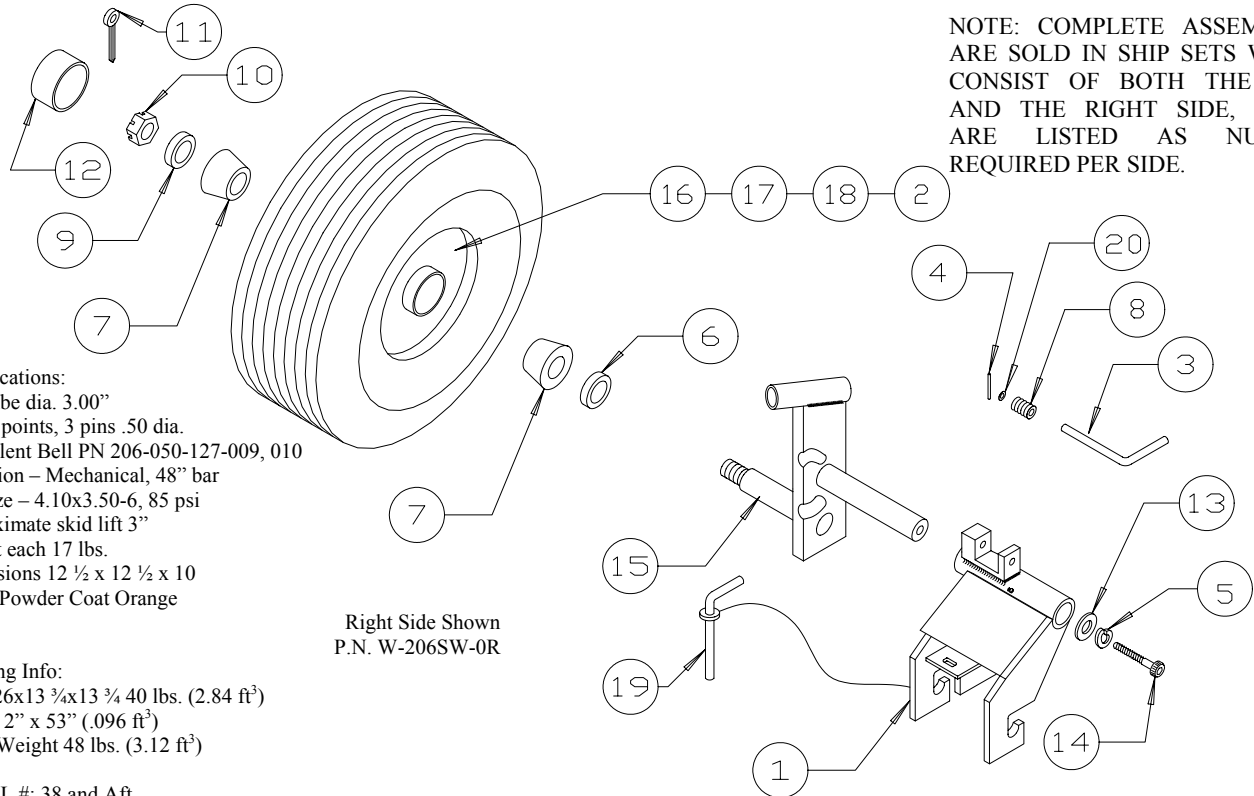
NOTE: COMPLETE ASSEMBLIES ARE SOLD IN SHIP SETS WHICH CONSIST OF BOTH THE LEFT AND THE RIGHT SIDE, PARTS ARE LISTED AS NUMBER REQUIRED PER SIDE.

Specifications:
 Skid tube dia. 3.00"
 Attach points, 3 pins .50 dia.
 Equivalent Bell PN 206-050-127-009, 010
 Operation – Mechanical, 48" bar
 Tire size – 4.10x3.50-6, 85 psi
 Approximate skid lift 3"
 Weight each 17 lbs.
 Dimensions 12 ½ x 12 ½ x 10
 Color: Powder Coat Orange

Shipping Info:
 1 box 26x13 ¾x13 ¾ 40 lbs. (2.84 ft³)
 1 Tube 2" x 53" (.096 ft³)
 Total: Weight 48 lbs. (3.12 ft³)

SERIAL #: 38 and Aft

Right Side Shown
 P.N. W-206SW-0R



Page 1 of 1		ELIGIBLE AIRCRAFT: BELL JET RANGER 206A, 206B	MODEL: BDW-206SW
ITEM NO	PART NUMBER	DESCRIPTION	NO REQ.
1	W-206SW-10 L	WELDED FRAME ASSEMBLY	1
1	W-206SW-11 R	WELDED FRAME ASSEMBLY	1
3	W-U-101	L-PIN	1
4	PIN ROLL 3/32 X 5/8	ROLL PIN	1
5	WASHER FENDER 5/16	FENDER WASHER	1
6	VB12192	SEAL-SPINDLE 1.25 DIAMETER	1
7	L44643	WHEEL BEARING	4
8	S-264	SPRING	1
9	WASHER SAE ¾	WASHER	1
10	NUT SLOTTED ¾-16	SLOTTED NUT	1
11	PIN COTTER 1/8 X 1 ½	COTTER PIN	1
12	HC-1	HUB CAP	1
13	W-206SW-06	WASHER FOR SINGLE WHEEL	1
14	BOLT 5/16-18 X ¾	BOLT	1
15	W-206SW-08	ARM WELDED ASM	1
15	W-206SW-09	ARM WELDED ASM	1
16	W-4.10/3.50 X 6 TW	WHEEL ASSEMBLY W/ TIRE & BRG	1
17	W-4.10/3.50 X 6 TR	TIRE 6 PLY TUBELESS	1
18	W-4.10/3.50 X 6 TB	TUBE	1
19	W-2061-03	TUBE PIN	1
20	AN960-516	WASHER	1
	W-U-110	HANDLE ASSEMBLY (NOT SHOWN)	1