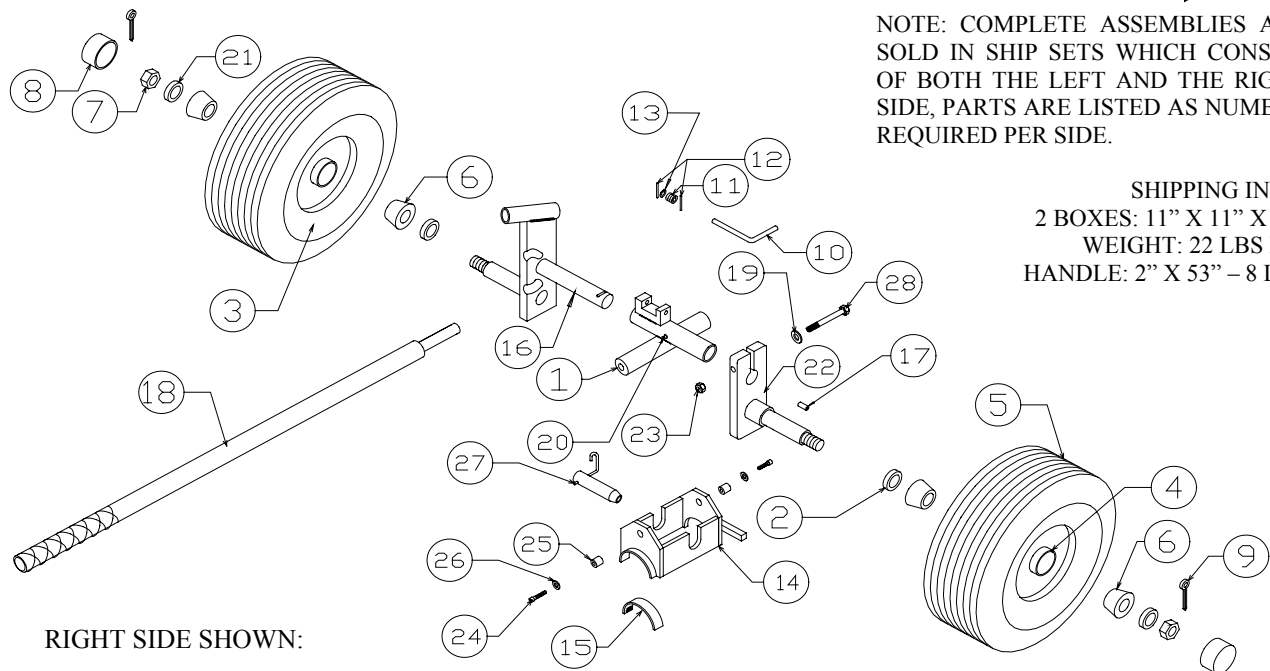


NOTE: COMPLETE ASSEMBLIES ARE SOLD IN SHIP SETS WHICH CONSIST OF BOTH THE LEFT AND THE RIGHT SIDE, PARTS ARE LISTED AS NUMBER REQUIRED PER SIDE.

SHIPPING INFO:  
2 BOXES: 11" X 11" X 16"  
WEIGHT: 22 LBS EA.  
HANDLE: 2" X 53" - 8 LBS



RIGHT SIDE SHOWN:

Page 1 of 1

ELIGIBLE AIRCRAFT: ENSTROM

MODEL: BDW-F28A

ITEM NO	PART NUMBER	DESCRIPTION	NO REQ.
1	W-28A-09L	LEFT CENTER SECTION	1
1	W-28A-09R	RIGHT CENTER SECTION	1
2	1117844VHY	SEAL - SPINDLE 1.25 DIAMETER	2
3	W-4.10/3.50 X 4 TB	INNER TUBE	2
4	W-4.10/3.50 X 4 TW	WHEEL ASM. W/ TIRE & BEARING	2
5	W-4.10/3.50 X 4 TR	TIRE 6 PLY	2
6	LM11949	WHEEL BEARING	4
7	NUT SLOTTED 3/4-16	SLOTTED NUT	2
8	HC-1	HUB CAP	2
9	PIN COTTER 1/8 X 1 1/2	COTTER PIN	2
10	W-U-101	L-PIN	1
11	AN960-516	WASHER	2
12	PIN ROLL 3/32 X 5/8	ROLL PIN	1
13	S-264	SPRING	2
14	W-28A-10L	LEFT FRAME ASSEMBLY	1
14	W-28A-10R	RIGHT FRAME ASSEMBLY	1
15	W-28A-13	ROUGH BACK	2
16	W-28A-11L	LEFT OUTER ARM ASSEMBLY	1
16	W-28A-11R	RIGHT OUTER ARM ASSEMBLY	1
17	PIN ROLL 1/4 X 3/4	ROLL PIN	1
18	W-U-110	HANDLE	1
19	AN960-516L	WASHER	2
20	ZERK 1/4-28	ZERK GREASE FITTING	2
21	WASHER SAE 3/4	WASHER	4
22	W-28A-12	INNER ARM ASSEMBLY	1
23	NUT LOCK 5/16-24	LOCK NUT	2
24	MS20426AD6-6	RIVET	4
25	W-28A-05	BUSHING	2
26	WASHER HIGH COLLAR LOCK 5/16	HI COLLAR LOCK WASHER	2
27	W-28A-07L	LOCK PIN	1
27	W-28A-07R	LOCK PIN	1
28	BOLT 5/16-24 X 2 1/2	BOLT	2