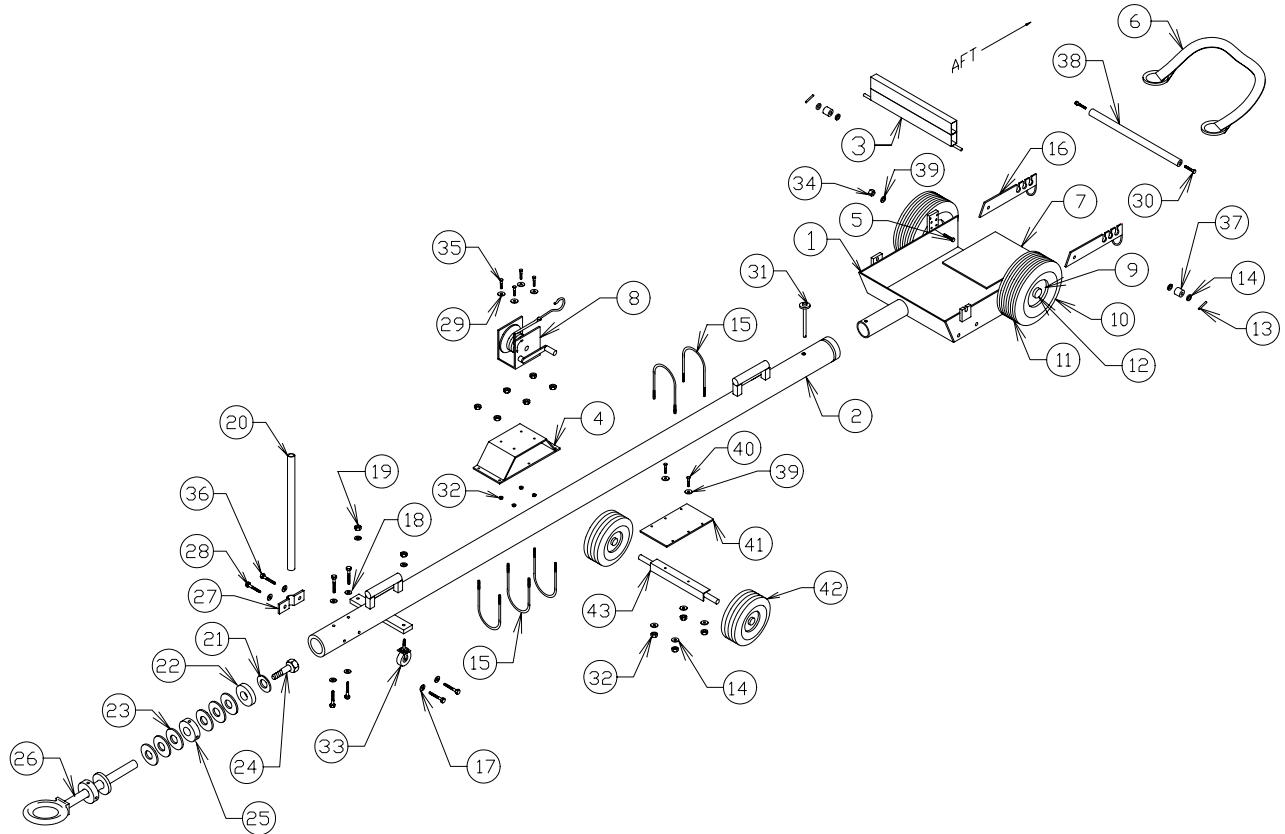


Page 1 of 2

TY-TB-FTD

ITEM NO	PART NUMBER	DESCRIPTION	NO REQ.
1	T-12-100T	BODY	1
2	TY-TB-75-01-00	TUBE ASSEMBLY	1
3	T-12-200A	WHEEL STOP	1
4	TY-PH12-02	WINCH MOUNT	1
5	BOLT 5/16-24 X 1 ½	BOLT	4
6	T-12-800	RING STRAP ASSEMBLY	1
7	T-12-300	FLAPPER ASSEMBLY	1
8	DL-2500AS	WINCH	1
9	40-77	5.00 X 5 WHEEL	2
10	W-5.00 X 5 TR	TIRE	2
11	W-5.00 X 5 TB	TUBE	2
12	W-245-25	SPINDLE NUT	2
13	PIN COTTER 3/32 X ¾	COTTER PIN	2
14	WASHER SAE 3/8	SAE WASHER	16
15	U BOLT 3/8-16 X 3 ½	U BOLT	5
16	T-12-110-1	REAR STOP BRACKETT	2
17	WASHER LOCK 3/8	LOCK WASHER	6
18	WASHER LOCK ½	LOCK WASHER	4
19	NUT HEX 3/8-16	HEX NUT	2
20	H-6M5-00	HANDLE	1
21	WASHER LOCK 7/8	LOCK WASHER	1
22	TY-TB-75-02-02	WASHER	1
23	TY-TB-75-02-06	SHOCK DISC	6
24	BOLT 7/8-9 X 1 ½	BOLT	1
25	TY-TB-75-02-08	MOUNT BUSHINGS	1



Page 2 of 2

TY-TB-FTD

ITEM NO	PART NUMBER	DESCRIPTION	NO REQ.
26	TY-TB-75-02-01	RING/TUBE ASSEMBLY	1
27	T-12-HM	HANDLE MOUNT	1
28	BOLT 3/8-16 X 1	BOLT	4
29	WASHER USS 3/8	USS WASHER	4
30	BOLT 1/2-13 X 1 1/2	BOLT	2
31	RELEASE PIN 1/2 X 4-6	RELEASE PIN	1
32	NUT LOCK 3/8-16	LOCK NUT	10
33	CASTER SWIVEL 3/8-16 X 2	SWIVEL CASTER	2
34	NUT LOCK 5/16-24	LOCK NUT	4
35	BOLT 3/8-16 X 1	BOLT	4
36	BOLT 1/2-13 X 1	BOLT	4
37	PT300-05-07	ROLLER	2
38	T-12-900	STOP	1
39	WASHER SAE 5/16	SAE WASHER	6
40	BOLT 5/16-18 X 1	BOLT	2
41	TY-TB-75-04-00	WHEEL PLATE	1
42	W-2.80 X 4 TW 5/8	TIRE & WHEEL ASSEMBLY	2
43	TY-TB-75-03-00	AXLE ASSEMBLY	1